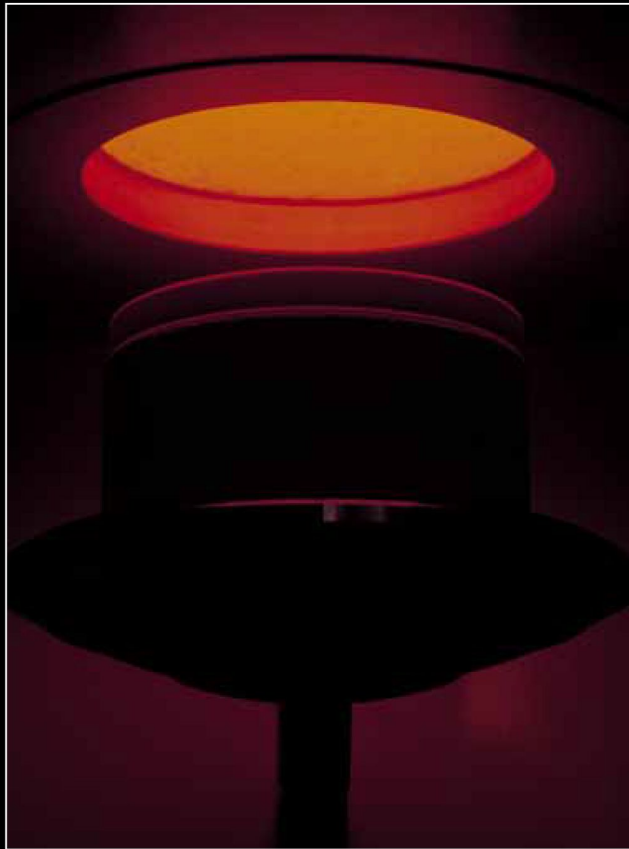




DENTAL EQUIPMENT MANUFACTURING



005

CERAMICMASTER E20

Automatic Programmable Vacuum Furnace For Dental Ceramics.

- Designed for all available types of dental metal ceramics
- 201 operating programs
- Completely controlled process - 14 programmable
- Parameters in every program: name, idle temperature
- Dry temperature, pre drying time, drying time, firing,
- First cooling time, second cooling time, vacuum control
- Improved system of self-diagnostics and auto calibration
- Multifunctional handle easy for operation
- A quartz muffle
- An option for automatic continuation of the program after short
- Power breakdown
- An option for transfer of program parameters on USB
- An option for remote analysis of damage



TECHNICAL DATA

POWER SUPPLY	~230 V ±10%, 50/60 HZ
POWER CONSUMPTION	
FURNACE WITH VACUUM PUMP	1700 W
FURNACE WITHOUT VACUUM PUMP	1550 W
VACUUM PUMP DATA	
SUCTION CAPACITY	22 L/MIN
ADJUSTABLE VACUUM	FROM 0,1 TO 0,92 BAR
MAXIMUM FIRING TEMPERATURE	1200°C
FIRING CHAMBER DIMENSIONS	Φ 95 MM, H 60 MM
DIMENSIONS (W/D/H)	265/370/565 MM
WEIGHT	24 KG

CERAMICMASTER E1000

Programmable dental furnace for metal and pure ceramics

- Designed for all types of dental pure ceramics, based on aluminium oxide
- Can be used for metal ceramics
- 201 operational programmes
- Completely controlled process - 21 programmable parameters in each program: start temperature, first drying, second drying, first firing, second firing, first cooling, second cooling, vacuum control
- Improved system for self-diagnostics
- Multifunctional handle easy for operation
- A quartz muffle
- An additional timer for real time
- An option for automatic continuation of the programme on brief power breakdown
- An option for transfer of programme parameters by series interface RS232
- An option for a remote analysis of damage

ACCESSORIES:

- Isolation table Ref. № 122000025
- Firing tray Ref. № 122000026
- Pins Ref. № 122000027
- Vacuum pump PVM122 Ref. № 032000000



TECHNICAL DATA

POWER SUPPLY	110/230V ±10%, 50/60 HZ
POWER CONSUMPTION	
FURNACE WITH VACUUM PUMP	1700W
VACUUM PUMP DATA	
SUCTION CAPACITY	22 L/MIN
ADJUSTABLE VACUUM	FROM 0,1 TO 0,92 BAR
MAXIMUM FIRING TEMPERATURE	1200 C
FIRING CHAMBER DIMENSIONS	Φ 95 MM, H60 MM
DIMENSIONS	
W/D/H	370X380X580 MM
WEIGHT	27KG

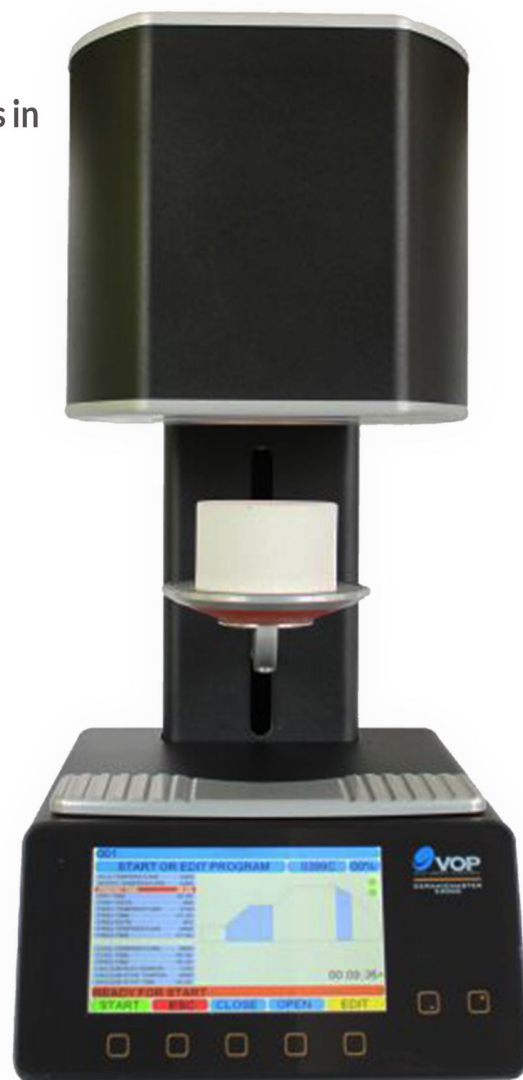
CERAMICMASTER E3000

Automatic programmable dental furnace for metal and pure ceramics.

- Designed for all available types of dental metal ceramics
- 255 individual programs
- Completely controlled process - 16 programmable parameters in every program
- Improved system of self-diagnostics and auto calibration
- 7" TFT display with protective tempered glass
- Sensor buttons
- Graphical display of processes progress
- Heater with heating element in a quartz spiral tube
- Pt/Ro thermocouple
- Automatic continuation of the program after short power breakdown
- USB transfer of programs parameters
- Remote analysis of damage

ACCESSORIES:

- Isolation table Ref. № 122000025
- Firing tray Ref. № 122000026
- Pins Ref. № 122000027
- Vacuum pump PVM122 Ref. № 032000000



TECHNICAL DATA

POWER SUPPLY	~230 V ±10%, 50/60 HZ
POWER CONSUMPTION	
FURNACE WITH VACUUM PUMP	1700W
FURNACE WITHOUT VACUUM PUMP	1550W
VACUUM PUMP DATA	
SUCTION CAPACITY	22 L/MIN
ADJUSTABLE VACUUM	FROM 0,1 TO 0,92 BAR
MAXIMUM FIRING TEMPERATURE	1200° C
FIRING CHAMBER DIMENSIONS	Φ 95 MM, H60 MM
DIMENSIONS W/D/H	265X370X565 MM
WEIGHT	25 KG

CERAMICMASTER PRESS

Programmable Dental Furnace For Metal, Pure And Press Ceramics

- Designed for all available types of dental press ceramics
- No need of compressor for the pressing process
- Can be used for metal ceramics and sintering of pure ceramics, based on aluminium oxide
- 201 operating programmes
- Completely controlled process - 24 programmable parameters in every program: starting temperature, first drying, second drying, first firing, second firing, time and strength of pressing, first cooling, second cooling, vacuum control
- Improved system for self-diagnostics
- Multifunctional programming knob
- A quartz muffle

ACCESSORIES:

- Isolation press table Ref. Nº 122000022
- Ceramic insert 100 g ring Ref. Nº 122000023
- Ceramic insert 200 g ring Ref. Nº 122000023
- Isolation table Ref. Nº 122000025
- Firing tray Ref. Nº 122000026
- Pins Ref. Nº 122000027
- Vacuum pump PVM122 Ref. Nº 032000000



TECHNICAL DATA

POWER SUPPLY	110/230V ±10%, 50/60 HZ
POWER CONSUMPTION FURNACE WITH VACUUM PUMP	1700W
VACUUM PUMP DATA	
SUCTION CAPACITY	22 L/MIN
ADJUSTABLE VACUUM	FROM 0,1 TO 0,92 BAR
MAXIMUM FIRING TEMPERATURE	1200 C
FIRING CHAMBER DIMENSIONS	Φ 95 MM, H 60 MM
DIMENSIONS	
W/D/H	370X380X740 MM
WEIGHT	30KG

ZIRCONMASTER S

The furnace ZirconMaster S is designed for use in dental laboratories for the sintering of dental prostheses based on ZnO₂.

ZirconMaster S has following features:

- ▶ Fast temperature increasing
- ▶ Controlled cooling
- ▶ High quality MoSi₂ heaters
- ▶ 10 programs
- ▶ Program restart after short power failure
- ▶ Firmware upgrade via RS232
- ▶ Modern design
- ▶ Compact size
- ▶ Low energy consumption during main firing stage

ACCESSORIES:

- | | |
|--------------------------|------------------|
| ▶ Tray GTS | Ref. № 234000001 |
| ▶ Tray AG | Ref. № 234000002 |
| ▶ Pearls AG | Ref. № 234000003 |
| ▶ Pearls Noritake | Ref. № 234000004 |
| ▶ Gripper tray | Ref. № 234000005 |
| ▶ Isolation table bottom | Ref. № 234020301 |
| ▶ Isolation table top | Ref. № 234020302 |



TECHNICAL DATA

POWER SUPPLY	110/230 V ±10%, 50/60 HZ
POWER CONSUMPTION	1650 W
FIRING CHAMBER DIMENSIONS	120X120X100
MAXIMUM FIRING TEMPERATURE	1600°C
DIMENSIONS	
W/D/H	420X400X870 MM
WEIGHT	60 KG

LC CAST 600T

Automatic tabletop dental casting unit with high frequency induction melting and centrifugal casting.

- Designed for casting of dental Co-Cr, Ni-Cr and precious alloys
- Tabletop design
- Both manual and automatic mode of melting
- Automatic maintenance of optimum power
- Automatic casting mode
- Autonomic cooling system

ACCESSORIES:

- Crucible tray Ref. № 062000035
- Ring gripper Ref. № 062000037
- Crucible Ref. № 062000038
- Silicon ring №2 Ref. № 062000039
- Silicon ring №3 Ref. № 062000040
- Silicon ring №4 Ref. № 062000041
- Graphite insert Ref. № 062000042



TECHNICAL DATA

POWER SUPPLY	110/230V~, ±10%, 50/60HZ
POWER CONSUMPTION	2500 W
MINIMUM ALLOY QUANTITY IN THE CRUCIBLE	7 G
MAXIMUM ALLOY QUANTITY IN THE CRUCIBLE	80 G
CRUCIBLE TYPE FOR DENTAL ALLOY S CERAMIC CRUCIBLE	S CERAMIC CRUCIBLE
CRUCIBLE TYPE FOR PRECIOUS ALLOYS CERAMIC	CRUCIBLE, WITH GRAPHITE INSERT
MAXIMUM TIME FOR FULLY MELTING OF 30 G DENTAL ALLOY	60 S
COOLING AUTONOMOUS,	DISTILLED WATER COOLING
HF POWER SETTING FOR MELTING AUTOMATIC	AUTOMATIC
MOTOR ACCELERATION SETTING MANUAL	MANUAL
CASTING AUTOMATIC	AUTOMATIC
DIMENSIONS W/D/H	564X620X540 MM
WEIGHT	75 KG

LC CAST 600A

Automatic dental casting unit with high frequency induction melting and centrifugal casting

- ▶ Designed for casting of dental Co-Cr, Ni-Cr and precious alloys
- ▶ Both manual and automatic mode of melting
- ▶ Automatic maintenance of optimum power
- ▶ Automatic casting mode
- ▶ Autonomic cooling system

ACCESSORIES:

- ▶ Crucible tray Ref. № 062000035
- ▶ Ring gripper Ref. № 062000037
- ▶ Crucible Ref. № 062000038
- ▶ Silicon ring №2 Ref. № 062000039
- ▶ Silicon ring №3 Ref. № 062000040
- ▶ Silicon ring №4 Ref. № 062000041
- ▶ Graphite insert Ref. № 062000042



TECHNICAL DATA

POWER SUPPLY	110/230V±10%, 50/60 HZ
POWER CONSUMPTION	3KW
MINIMUM ALLOY QUANTITY IN THE CRUCIBLE	7 G
MAXIMUM ALLOY QUANTITY IN THE CRUCIBLE	80 G
CRUCIBLE TYPE FOR DENTAL ALLOYS	CERAMIC CRUCIBLE
CRUCIBLE TYPE FOR PRECIOUS ALLOYS	CERAMIC CRUCIBLE WITH GRAPHITE INSERT
MAXIMUM TIME FOR FULLY MELTING OF 30 G	60 S
DENTAL ALLOY	
COOLING	AUTONOMOUS DISTILLED WATER COOLING
HF POWER SETTING FOR MELTING	AUTOMATIC/MANUAL
MOTOR ACCELERATION SETTING	MANUAL
CASTING	AUTOMATIC
DIMENSIONS	
W/D/H	620X620X1060 MM
WEIGHT	135KG

VACUM MIXER VMIX

VMIX is a highly productive vacuum mixer with microprocessor control, designed for mixing of investments, plaster and silicone.

- Completely automatic process
- Only power supply connection it is needed for its operation,
- Benchtop or wall mounted version,
- Programmable time for the operating cycle:
Preliminary vacuuming - mixing - vacuuming after mixing



TECHNICAL DATA

POWER SUPPLY	220/230 V, 50 HZ
POWER CONSUMPTION	260 RPM
VACUUM PUMP CAPACITY	20L/ MIN
VACUUM PUMP CONTROLLED VACUUM	0,93 BAR
PROGRAMMABLE TIME FOR THE OPERATING CYCLE:	
- PRELIMINARY VACUUMING	0 - 20 S
- MIXING	0 - 250 S
- VACUUMING AFTER MIXING	0 - 10 S
WEIGHT (WITHOUT BOWLS)	10,1 KG
DIMENSIONS (L/B/H)	310 X 210X 330 MM
BOWL SIZE	550,M

FIREMAGIC FM4 PLUS

Microprocessor programmable furnace for preliminary thermal treatment for model moulding and precious metals

- 10 + 1 user programs (Power Independent)
- 5 temperature stages
- Programmable speed of temperature increase between stages from 10 to 100 C/min
- Automatic parameter control
- Postponed start up to 90 h
- Automatic control of steam extractor
- An option for working with shock investments



ACCESSORIES:

- Steam extractor Ref. Nº 058000000
- Ceramic trays set Ref. Nº 054000013

TECHNICAL DATA

POWER SUPPLY	230 V ±10%, 50 HZ
POWER CONSUMPTION	2000 W
MAXIMUM FIRING TEMPERATURE	1100°C
MAXIMUM PROGRAM DURATION	100 H
TEMPERATURE SPEED OF INCREASE BETWEEN THE ZONES	FROM 1°C/MIN TO 10°C/MIN
FIRING CHAMBER DIMENSIONS W /D /H	180/100/170 MM
DIMENSIONS (WITHOUT CONTROL BLOCK)	
W /D /H	360X400X360 MM
WEIGHT	28 KG

PINPRECISE PP100

Pin drilling unit

- ▶ Precise mechanical positioning
- ▶ Drill revolution regulation
- ▶ Automatic switching on system
- ▶ Adaptable to all kinds of systems for models preparation by drill movement revolution
- ▶ Compact and ergonomic
- ▶ Dust reduction system



ACCESSORIES:

Pin system Ref. Nº 100000032

Drill Ref. Nº 100000033

TECHNICAL DATA

POWER SUPPLY	110/230V ±10%,50/60HZ
POWER CONSUMPTION	100 W
MAXIMUM DRILL REVOLUTIONS	4000 RPM
COLLET DIAMETER	Φ 3 MM
DRILLING DEPTH	12 MM
LASER	CLASS 3
	MAX 5 MW
DIMENSIONS	
W/D/H	157X410X160 MM
WEIGHT	5KG

SLITPRECISE SP100

A new generation of electronic separator for plaster moulds with a laser marker

- The cutting is made from the side of the model's base
- The direction of the cut is selected by means of a laser marker
- An option for engaging to an aspiration
- A specially designed diamond separator for easier cutting
- A special system for cutting safety



ACCESSORIES:

- Diamond disk DFS Ref. № 110000001
- Diamond disk Nuova Ref. № 110000002

TECHNICAL DATA

POWER SUPPLY	110/230V ±10%,50/60HZ
POWER CONSUMPTION	200W
MAXIMUM REVOLUTIONS	10000 RPM
MAXIMUM DEPTH OF THE CUT	26,5 MM
WIDTH OF THE CUT	0,3 MM
DIAMOND CUTTING DISK	Φ85XΦ16X0,3
LASER	CLASS 2
DIMENSIONS	
W/D/H	290X320X170 MM
WEIGHT	10KG